

Check Valve 4000

3/8" up to 3"

Non-return valve for backflow prevention

- All wetted parts stainless steel
- Compact design
- Sealing material PTFE

Technical Information

Nominal sizes	angle seat body angle body flange body	3/8" - 3" 1/2" - 2" 1/2" - 3"
Body material	stainless steel 316 L	
Material inner parts	stainless steel 316 Ti/301	
Material seating seal	PTFE (EPDM, NBR, FKM, PEEK)	
Connections	NPT-thread 3/8" - 3" welding ends tri clamp flanges acc. DIN EN 1092-1 flanges acc. ANSI 150	
Pressure class	580 psi	
pressure limitation	limitation for dangerous gases acc. Pressure equipment directive 97/23/EG (category I): PS (psi) x DN (inch) / 1.75 < 1000	
Cracking/lifting pressure	ca. 3 psi (ca. 1.5 psi with reduced spring tension)	
Temperature range	-40°F up to +392°F (opt. up to 428°F)	



Operating Pressures

Nominal size inch	adm. differential pressure (backpressure) [psi] seating seal	
	PTFE/PEEK	FKM / EPDM / NBR
3/8"	580	230
1/2"	580	230
3/4"	580	230
1"	580	230
1 1/4"	580	230
1 1/2"	580	230
2"	365	230
2 1/2"	365	230
3"	365	230

Check Valve 4000



Ordering Number System

1 2 3 4 5 6 7 8 9

4	0	0	0	/	V						R				
---	---	---	---	---	---	--	--	--	--	--	---	--	--	--	--

1 - 5: Please quote all 6 sections.
6 - 9: Quote only if required.

Model: 4 0 0 0 /

Nominal Size: V

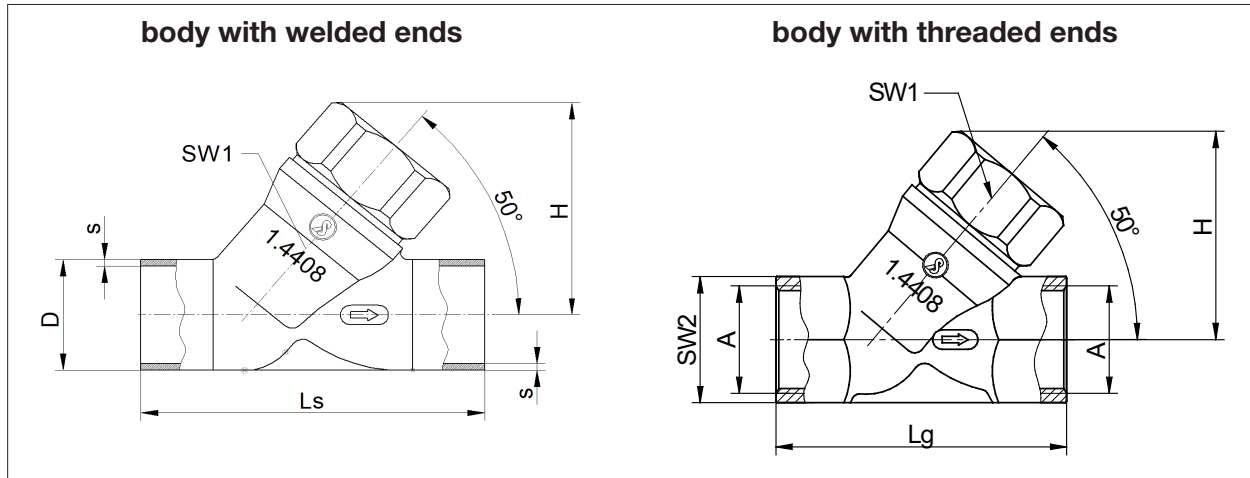
Symbol: "V": Valve
"A": Actuator (valve without body)
"R": Repair kit (sealings)

1. Body type	2. Connection	3. Body material	4. Seating seal		5. Pilot function	6. Springs		7. Body		8. Upper part	9. Special versions		
1 angled body	0 BSP thread	2 stainless steel	-	without	R	-	standard	-	standard	-	standard	S	special versions
2 flanged body	2 without thread with welding ends (socket weld connection)		0	PTFE		0	reduced spring resistance						
3 flange valve ANSI 150			1	FKM (Viton)									
7 angle valve			2	EPDM		B	without spring						
9 flange valve PN40	5 NPT-thread without thread		3	NBR									
	6 without thread		5	PTFE with 25% glass fibre									
	9 angle seat valve acc. DIN EN 1092-1		8	PEEK for applications above 160°C									
	C angle seat valve acc. ANSI 150		9	EPDM (FDA)									
	D with welding ends acc. DIN 11850												
	E with welding ends												
	H with welding ends acc. ISO 10226-2												
	T tapered pipe thread acc. EN 10226-2												
	Z Tri-Clamp connection (inch)												

Ordering example: 4000/020V1020R
 check valve with angle body, nominal size DN20, whitworth thread, stainless steel body, PTFE seat material, check valve

Dimensions and weights

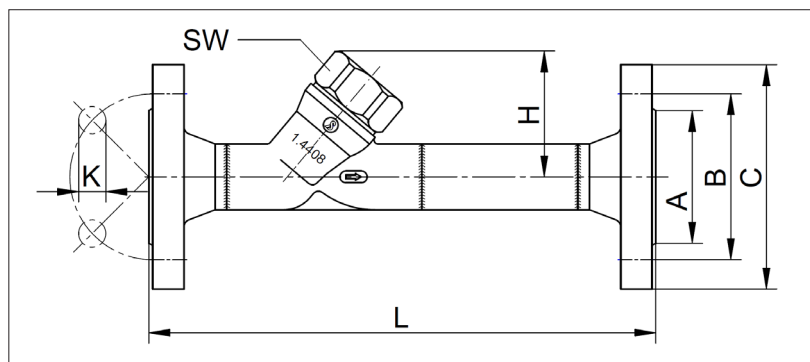
Angle seat body



Size	with welding ends acc. ISO			with NPT-thread			H	SW1	Cv Value	Weight [lbs]
	D	s	Ls	A	SW2	Lg				
3/8"	-	-	-	3/8"	0.91	2.36	1.71	1.06	1.2	0.5
1/2"	0.84	0.08	3.15	1/2"	0.98	2.56	1.69	1.06	3	0.5
3/4"	1.06	0.09	3.54	3/4"	1.22	2.95	2.13	1.26	7	1
1"	1.33	0.1	3.94	1"	1.54	3.54	2.48	1.42	13.3	1.5
1 1/4"	1.68	0.1	4.33	1 1/4"	1.89	4.33	2.91	1.42	21.5	2.5
1 1/2"	1.9	0.1	4.72	1 1/2"	2.17	4.72	3.13	1.06	32.5	2.5
2"	2.37	0.11	5.91	2"	2.68	5.91	3.78	1.42	47.6	5
2 1/2"	3	0.11	7.09	2 1/2"	3.35	7.09	4.85	1.42	87	9
3"	3.5	0.13	8.66	3"	3.94	8.43	5.99	1.61	139.2	15.4

Dimensions in inch

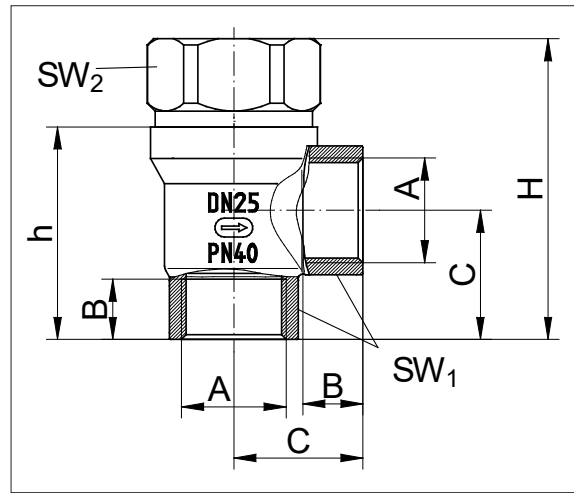
Angle seat body



Size	PN40 (DN65 and DN80 PN16)					ANSI 150					H	L	Weight [lbs]
	A	B	C	N (Number of holes)	K	A	B	C	N (Number of holes)	K			
1/2"	1.77	2.56	3.74	4	0.55	1.37	2.37	3.54	4	0.62	1.69	9.06	4
3/4"	2.28	2.95	4.13	4	0.55	1.69	2.75	3.94	4	0.62	2.13	10.24	6.4
1"	2.68	3.35	4.53	4	0.55	2	3.13	4.33	4	0.62	2.56	10.24	7.5
1 1/4"	3.07	3.94	5.51	4	0.71	2.5	3.5	4.53	4	0.62	3.11	11.81	11.5
1 1/2"	3.46	4.33	5.91	4	0.71	2.87	3.87	4.92	4	0.62	3.15	11.81	12.6
2"	4.02	4.92	6.5	4	0.71	3.63	4.75	5.91	4	0.75	3.82	13.78	19.4
2 1/2"	4.8	5.71	7.28	8	0.71	4.13	5.5	7.09	4	0.75	4.84	15.75	25.6
3"	5.43	6.3	7.87	8	0.71	5	6	7.48	4	0.75	5.98	17.72	32.9

Dimensions in inch

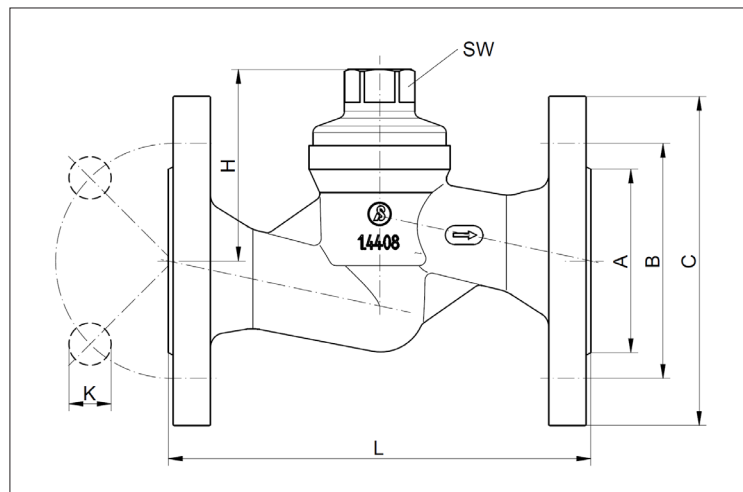
Rectangular body



Size	with NPT-thread		with NPT-thread		C	SW1	SW2	h	H	Weight [lbs]
	A	B	A	B						
1/2"	G 1/2"	0.59	NPT 1/2"	0.57	1.61	0.98	1.26	2.52	2.95	3
3/4"	G 3/4"	0.64	NPT 3/4"	0.59	1.61	1.26	1.42	2.6	3.48	3.5
1"	G 1"	0.75	NPT 1"	0.7	1.61	1.61	1.42	2.66	3.76	4.5
1 1/4"	G 1 1/4"	0.84	NPT 1 1/4"	0.72	2.56	1.97	1.06	3.66	4.94	5
1 1/2"	G 1 1/2"	0.84	NPT 1 1/2"	0.72	2.56	2.17	1.42	3.98	5.51	7.5
2"	G 2"	1.01	NPT 2"	0.72	2.56	2.68	1.42	4.57	6.56	11.5

Dimensions in inch

Flanged body



Size	Flanges acc. EN 1092-1; Face to face dimension acc. EN 558-1						Flanges acc. ASME B16.5; Face to face dimension acc. ANSI/ISA-75.08.01						H	SW	Weight [lbs]
	L	C	B	A	N (Number of holes)	K	L	C	B	A	N (Number of holes)	K			
1/2"	5.12	3.74	2.56	1.77	4	0.55	7.24	3.5	2.38	1.38	4	0.62	1.73	1.26	8.2
3/4"	5.91	4.13	2.95	2.28	4	0.55	7.24	3.88	2.75	1.69	4	0.62	2.4	1.42	8.4
1"	6.3	4.53	3.35	2.68	4	0.55	7.24	4.25	3.12	2	4	0.62	2.83	1.42	9.7
1 1/4"	7.09	5.51	3.94	3.07	4	0.71	7.87	4.62	3.5	2.5	4	0.62	3.23	1.06	13.5
1 1/2"	7.87	5.91	4.33	3.46	4	0.71	8.74	5	.88	2.88	4	0.62	3.9	1.42	17.9
2"	9.06	6.5	4.92	4.02	4	0.71	10	6	4.75	3.62	4	0.75	5.16	1.42	25.6
2 1/2"	11.42	7.28	5.71	4.8	8	0.71	-	-	-	-	-	-	5.59	-	44.1
3"	12.2	7.87	6.3	5.43	8	0.71	-	-	-	-	-	-	7.01	-	58

Dimensions in inch

Text and pictures are not binding. We reserve the right to alter the equipment.