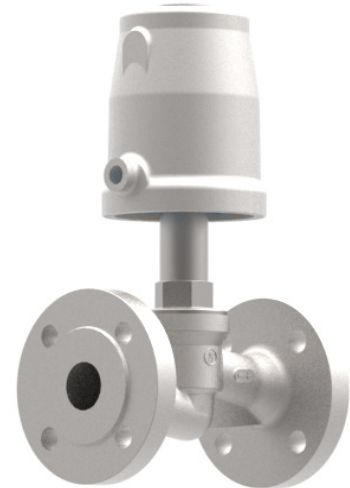


DN 15 up to DN 50

Pneumatically operated flanged valves for the control of fluids of up to 220°C.

- Compact design
- Unaffected by lightly contaminated media
- For temperatures up to +220°C
- Working pressures up to 40 bar
- Versatile actuators
- Preferred usage: steam applications



Technical Information

Nominal sizes	DN 15 up to DN 50
Body material	1.4408 and 1.4436 (CF8M)
Connection	Flanges acc. DIN EN 1092-1 Flanges acc. ANSI #150
Dimensions	acc. DIN EN 558-1 Row 1 acc. ANSI/ISA-75.08.01
Nominal pressure	PN 40, ANSI #150
Max. fluid temperature*	0°C up to +220°C
Seating seal	PEEK-7 (T<160°C) PEEK-8 (T>160°C)
Ambient temperature*	-15°C up to +60°C
Viscosity of media	maximum 600 mm ² /s (600cSt, 80°E)
working pressure	See tables and diagrams, limitation for dangerous gases acc. Pressure equipment directive 97/23/EG (category I): PS x DN < 1000
Packing leakage	tested according to TA-Luft as defined in DIN EN ISO 15848-1 and VDI 2440

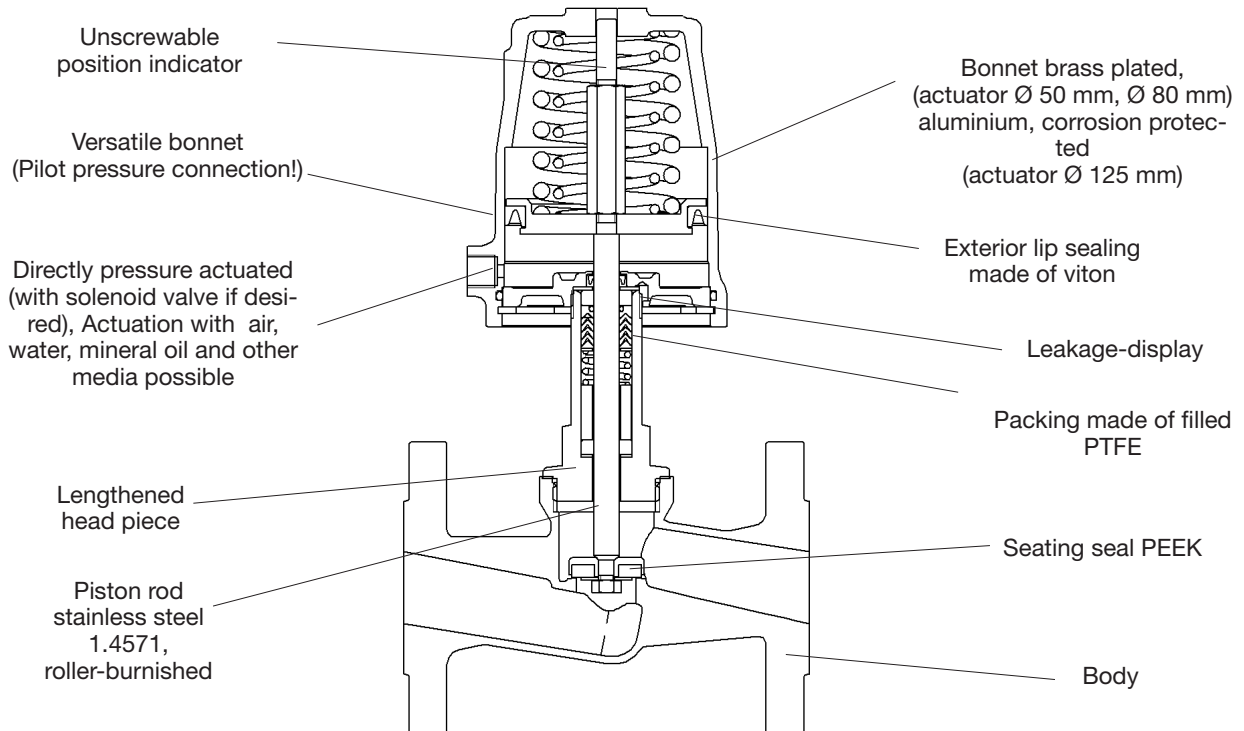
*: Please consider further temperature versions and limits in technical bulletin 32

Options

e.g.:

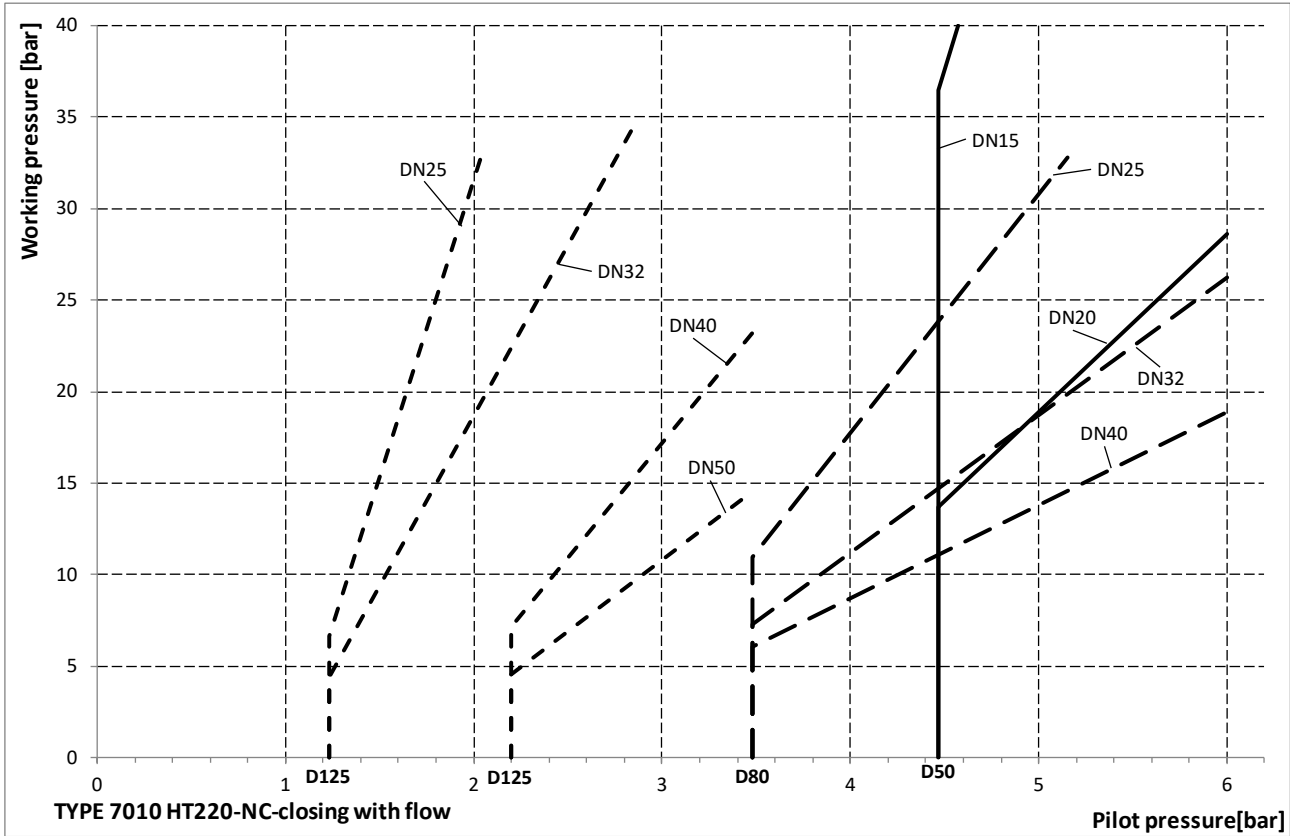
- Limit switches
 - inductive proximity switches
 - electrical contact switches
- Solenoid valves
- Additional manual operation

Normally closed



Angle seat valves NC, closing with flow. Preferred usages are gaseous media, with liquids closure strokes may occur.

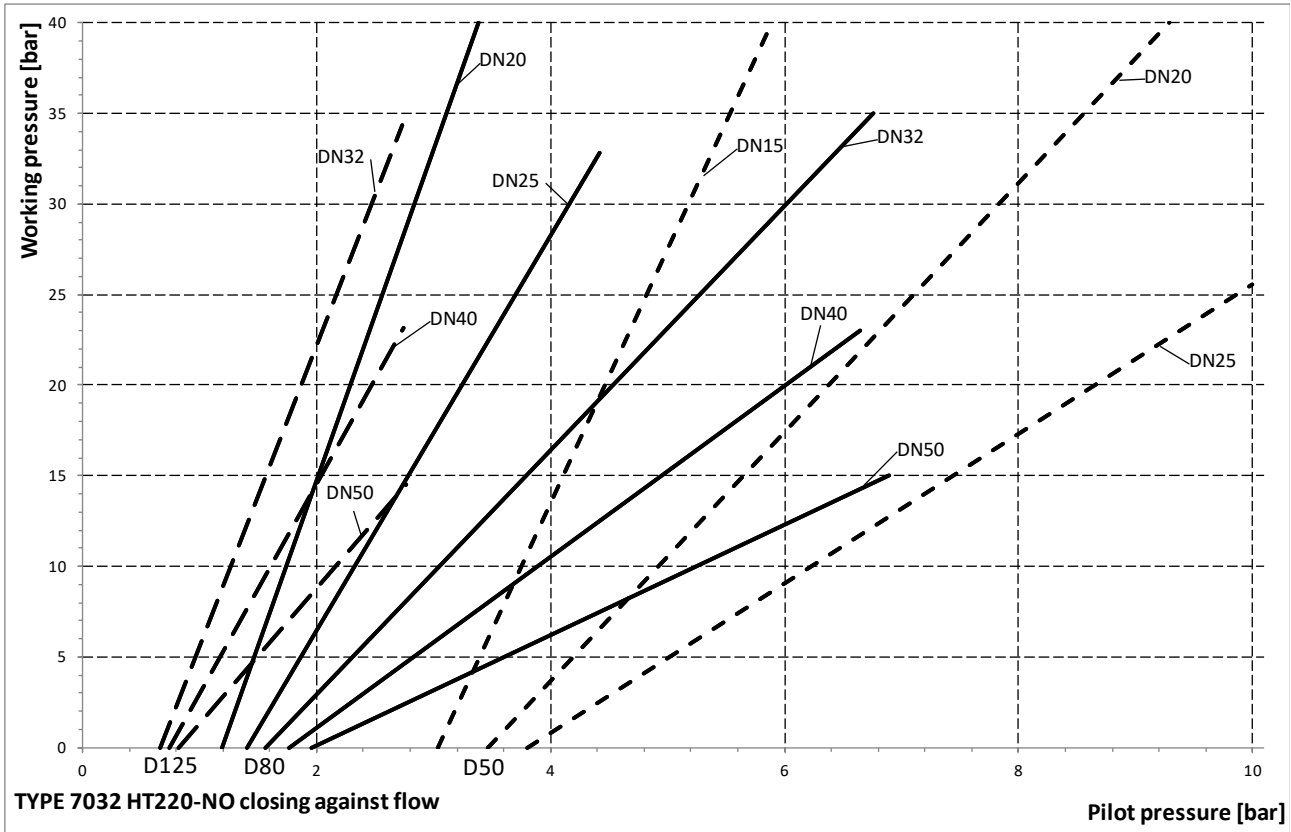
Seating seal PEEK-7 (T<160°C) and PEEK-8 (T>160°C).



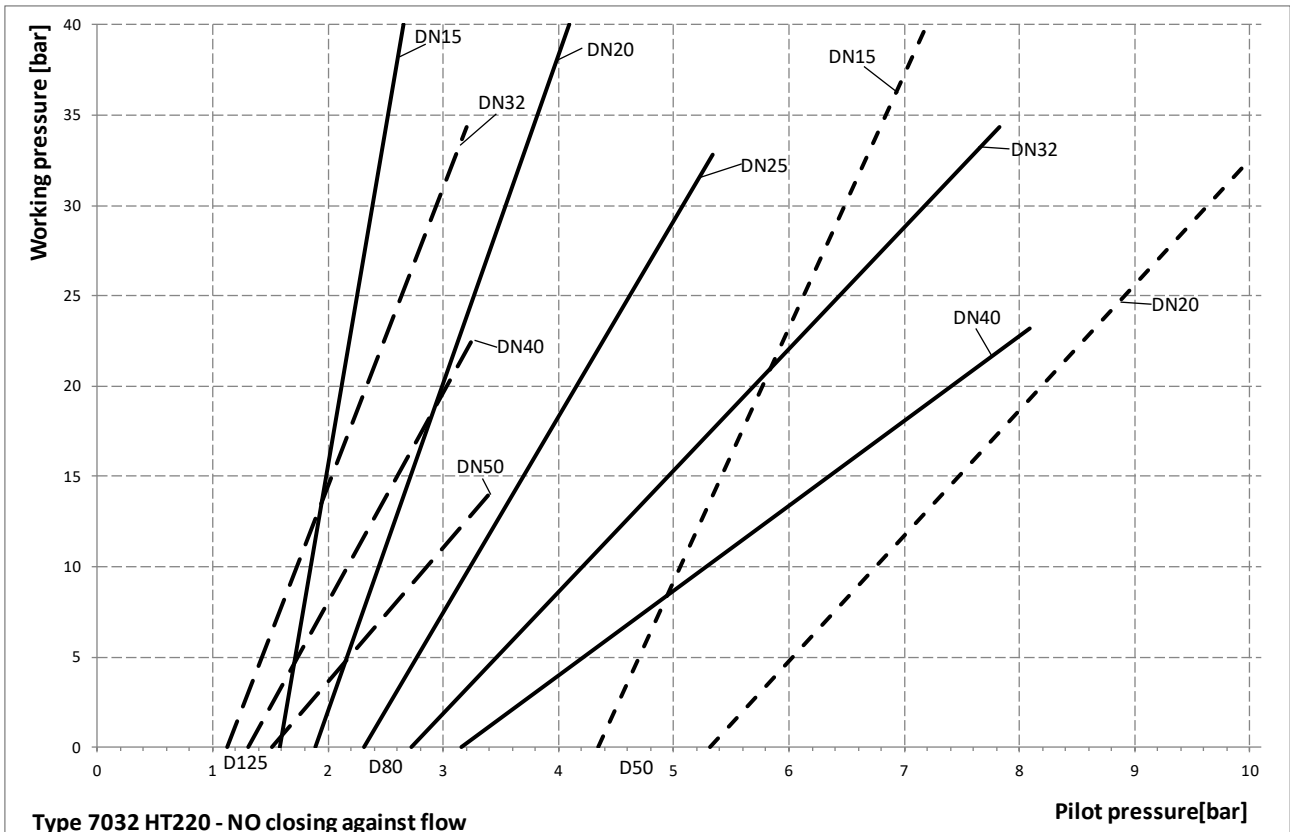
Spring set for version „closing with flow“:

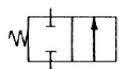
- actuator D50: 2 springs
- actuator D80: 1 strong spring
- actuator D125: DN25-32 1 strong spring
- actuator D125: DN40-50 2 strong springs

Angled seat valve NO, closing against flow. Seating seal PEEK-8 (T>160°C).



Angled seat valve NO, closing against flow. Seating seal PEEK-7 (T<160°C).





Angle seat valves, NC, closing against flow. Usage for fluid and gaseous media.

DN	Max. working pressure (differential pressure) bar		Pilot pressure bar	Actuator Ø mm	Springs
	PEEK-7 (T<160°C)	PEEK-8 (T>160°C)			
15	-	11	3,5-10	D50	1
15	4,9	23	4,5-10	D50	2
15	17	35	5,7-10	D50	3
20	-	7,4	4,5-10	D50	2
20	-	13	5,7-10	D50	3
20	22	35	3,5-10	D80	1
20	35	40	4,4-10	D80	2
25	8,4	18	3,5-10	D80	1
25	15	25	4,4-10	D80	2
25	24	32	5,6-10	D80	3
32	-	9,7	3,5-10	D80	1
32	6,3	14	4,4-10	D80	2
32	11	19	5,6-10	D80	3
32	-	8,4	1,3-10	D125	1
32	13	20	2,2-10	D125	2
32	22	30	3,1-10	D125	3
40	-	8	4,4-10	D80	2
40	4,3	10	5,6-10	D80	3
40	6,1	12	2,2-10	D125	2
40	11	18	3,1-10	D125	3
Reinforced design					
40	17	23	2,2 - 6	D250	6
50	-	6,4	5,6 - 10	D80	3
50	-	7,6	2,2 - 10	D125	2
50	5,9	11	3,1 - 10	D125	3
50	9,5	14	2,2 - 6	D250	6
50	13	18	2,7 - 6	D250	8

Ordering Number System

7	0	3	2	/			V		1	2	3	4	5	6	7	8	9	10	11	12	13	14	15	16	17
																				S					0

1 - 6 : Please quote all 6 sections.
7 - 12: Quote only if required.

Type
Size
Symbol: "V": Valve

"A": Actuator (valve without body)

"R": Repair kit (sealings)

1.	Body type	2.	Connection	3.	Body material	4.	Seating seal	5.	Pilot function	6.	Actuator
9	flanged valve	1	flange acc. DIN EN 1092-1	2	stainless steel	7	PEEK	0	NC (closing with flow)	0	piston Ø 50mm
		2	flange ANSI #150 length acc. ANSI/ISA 75.08.01			8	PEEK	1	NO (closing against flow)	1	piston Ø 80mm
								2	NC (closing against flow)	2	piston Ø 125mm
										C	diaphragm D250mm
										K	piston Ø 50mm with plastic bonnet
										M	piston Ø 80mm with plastic bonnet

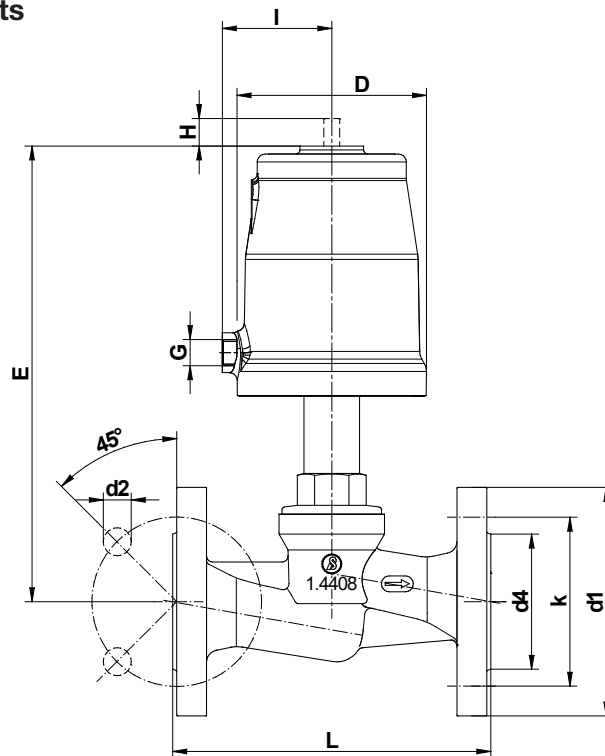
7.	Springs	8.	Packing	9.	Temperature version	10.	Accessories	11.	Special versions
-	standard	-	standard	-	standard	-	no accessories	-	S Special versions
1	1 spring				H high temperature version +200°C	1	electrical position indicator with one switch		
2	2 springs				B high temperature HT220	2	as above but with two switches	M	Position indicator with cable bushing
3	3 springs				U low temperature version down to -50°C fluid temp.	3	manual emergency operation		
T	6 springs (D250)				W low temperature version down to -40°C ambient temperature	4	additional manual operation	N	Position indicator with plug connection
W	8 springs (D250)					5	stroke limitation		
Y	12 springs (D250)					6	pilot valve DN 2, 230 V AC		
						7	pilot valve DN 2, 24 V DC		
						K	electr. position indicator compact		
						M	position indicator with two ind. switches 10 - 36 V DC (PNP)		
						P	position indicator with one ind. switches 10 - 36 V DC (PNP)		
						T	position indicator compact, inductive 10 - 30 V DC (PNP)		

Ordering example: 7032/025V9127211--B-S----0
 Flanged valve type 7032, DN 25, connection flange acc. DIN EN 1092-1, body material stainless steel, seating seal PEEK, NC closing against flow, actuator 80 mm (2"), one spring, high temperature version HT 220.

Flanged Valve HT220 7032

with piston actuator

Dimensions and Weights



DIN-flange

DN	Actuator	L	D	d	d1	d2	k	E	G	Stroke	I	Kvs-Value	Weight (kg)
15	50	130	62	95	45	14	65	169	1/8"	12	34,5	3,1	3,2
20	50	150	62	105	58	14	75	174	1/8"	15,5	34,5	6,5	4
25	50	160	62	115	68	14	85	191	1/8"	15,5	34,5	12	4,6
25	80	160	98	115	68	14	85	228	1/4"	20	55	12	6,2
32	50	180	62	140	78	18	100	195	1/8"	15,5	34,5	17	6,2
32	80	180	98	140	78	18	100	232	1/4"	23	55	17,5	7,7
32	125	180	144	140	78	18	100	258	1/4"	23	80	17,5	9,9
40	50	200	62	150	88	18	110	201	1/8"	15,5	34,5	25	7,3
40	80	200	98	150	88	18	110	239	1/4"	28,5	55	25	8,8
40	125	200	144	150	88	18	110	264	1/4"	28,5	80	25	11
Reinforced design													
40	50	200	62	150	88	18	110	216	1/8"	15,5	34,5	25	7,4
40	80	200	98	150	88	18	110	254	1/4"	28,5	55	25	8,9
40	125	200	144	150	88	18	110	279	1/4"	28,5	80	25	11,1
50	80	230	98	165	102	18	125	278	1/4"	30	55	40	10,9
50	125	230	144	165	102	18	125	303	1/4"	30	80	40	13,1

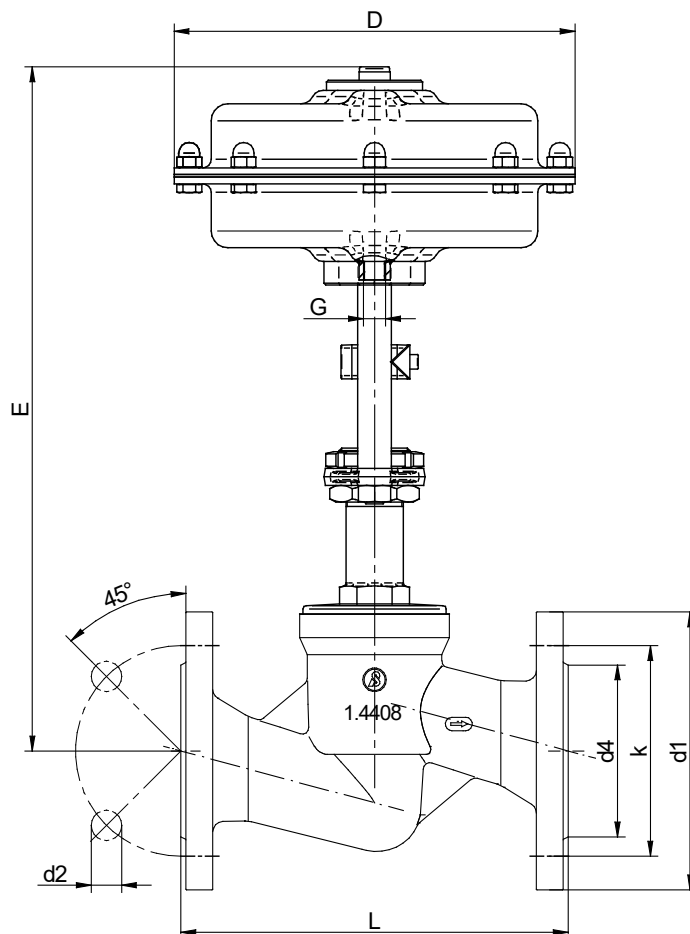
flange #ANSI 150 face to face dimensions acc. ANSI/ISA-75.08.01

DN	Antrieb	L	D	d	d1	d2	k	E	G	Hub	I	Kvs-Werte	Gewicht (kg)
15	50	184	62	88,9	35,1	15,7	60,5	169	1/8"	12	34,5	3,1	2,5
20	50	184	62	98,6	42,9	15,7	69,9	174	1/8"	15,5	34,5	6,5	3,3
25	50	184	62	108	50,8	15,7	79,2	191	1/8"	15,5	34,5	12	3,9
25	80	184	98	108	50,8	15,7	79,2	228	1/4"	20	55	12	5,5
32	50	200	62	117,3	63,5	15,7	88,9	195	1/8"	15,5	34,5	17	5,5
32	80	200	98	117,3	63,5	15,7	88,9	232	1/4"	23	55	17,5	7
32	125	200	144	117,3	63,5	15,7	88,9	258	1/4"	23	80	17,5	9,2
40	50	222	62	127	73,2	15,7	98,6	201	1/8"	15,5	34,5	25	6,6
40	80	222	98	127	73,2	15,7	98,6	239	1/4"	28,5	55	25	8,1
40	125	222	144	127	73,2	15,7	98,6	264	1/4"	28,5	80	25	10,3
Reinforced design													
40	50	222	62	127	73,2	15,7	98,6	216	1/8"	15,5	34,5	25	7,4
40	80	222	98	127	73,2	15,7	98,6	254	1/4"	28,5	55	25	8,9
40	125	222	144	127	73,2	15,7	98,6	279	1/4"	28,5	80	25	11,1
50	80	254	98	152,4	91,9	19,1	120,7	278	1/4"	30	55	40	10,1
50	125	254	144	152,4	91,9	19,1	120,7	303	1/4"	30	80	40	12,3

Flanged Valve HT220 7032

with diaphragm actuator

Dimensions and Weights



DIN-flange

DN	Actuator	L	d1	d2	d4	k	D	E	G	Stroke	Kvs-value	Weight (kg)
40	250	200	150	18	88	110	238	411	G1/4"	25	25	17,8
50	250	230	165	18	102	125	238	407	G1/4"	25	40	20

Flange #ANSI 150 face to face dimension acc. ANSI/ISA-75.08.01

DN	Actuator	L	d1	d2	d4	k	D	E	G	Stroke	Kvs-value	Weight (kg)
40	250	222	127	15,7	73,2	98,6	238	411	G 1/4"	25	25	17,8
50	250	254	152,4	19,1	91,9	102,7	238	407	G 1/4"	25	40	20

Text and pictures are not binding. We reserve the right, to alter the equipment.