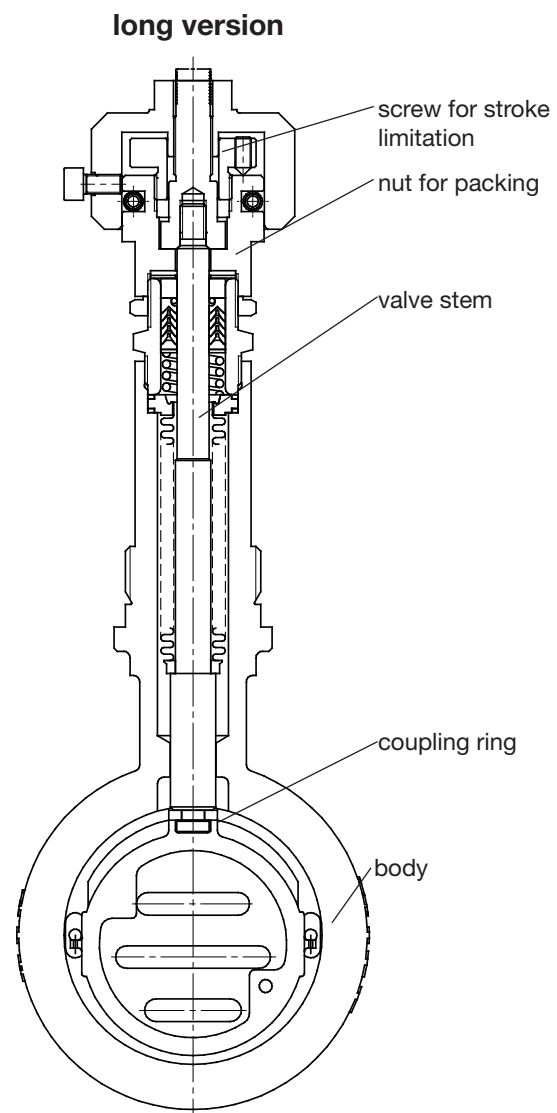
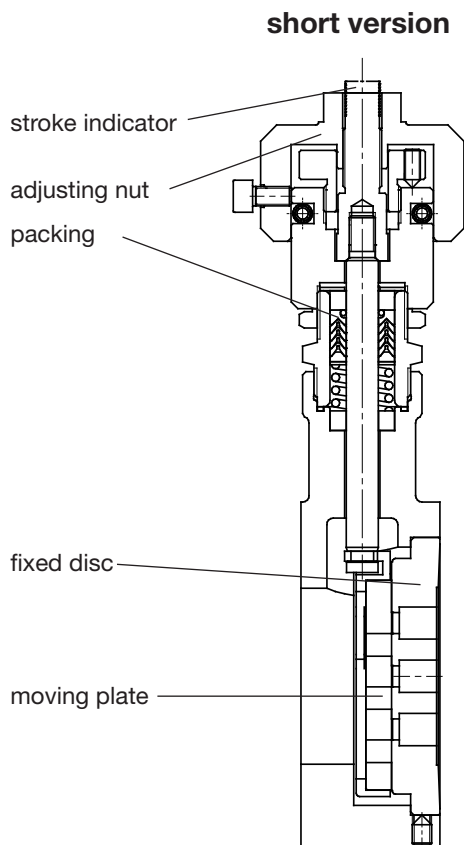


Series GS1; DN15 to DN150

Continuously adjustable orifice plate for precise adjustment of a defined flow rate.

- Infinitely adjustable in the built-in status
- Manual adjustment with safety device
- Optional sealable
- Defined characteristic curve
- Stops at the end positions
- Space-saving intermediate flange construction
- Very light weight
- Low noise operation
- Insensitive to cavitation



Technical information

Body design	flangeless, wafer-type construction dimensions acc. DIN EN 558-1 series 20 for flanges acc. DIN EN 1092-1, form B more versions see data-sheet 8021-GS3	
Nominal size	DN 15 to DN 150	
Nominal pressure	PN 40 acc. DIN 2401 (also for flanges PN 10 to PN 25)	
Fluid temperature	carbon steel body	-10°C up to +350°C
	stainless steel body	-60°C up to +350°C
	short version	up to max. +230°C
Ambient temperature*	-60°C up to +140°C	
Packing leakage	tested according to TA-Luft as defined in DIN EN ISO 15848-1 and VDI 2440	

Materials

Body	Carbon steel 1.0619	Stainless steel 1.4408
Diaphragm housing	Aluminium, KTL- coated	
Actuator springs	Stainless steel 1.4310	
Packing	PTFE carbon filled (spring 1.4310)	
Actuating stem	Stainless steel 1.4571, roller burnished	
Bellows (optional)	Stainless steel 1.4571	
Fixed disc	Stainless steel 1.4571 coated	STN2 - disc
Sliding disc	Special carbon material	STN2 - disc
Coupling ring for disc	Stainless steel 1.4581	
Positioner Housing	Aluminium anodized, synthetic	

Admissible Differential Pressure

DN	max. differential pressures	
	carbon/SFC-stainless steel	STN2
	bar	bar
15	40	40
20	40	40
25	40	40
32	40	40
40	40	27
50	40	40
65	40	38
80	40	22
100	25	13,5
125	16,5	8,9
150	16	11

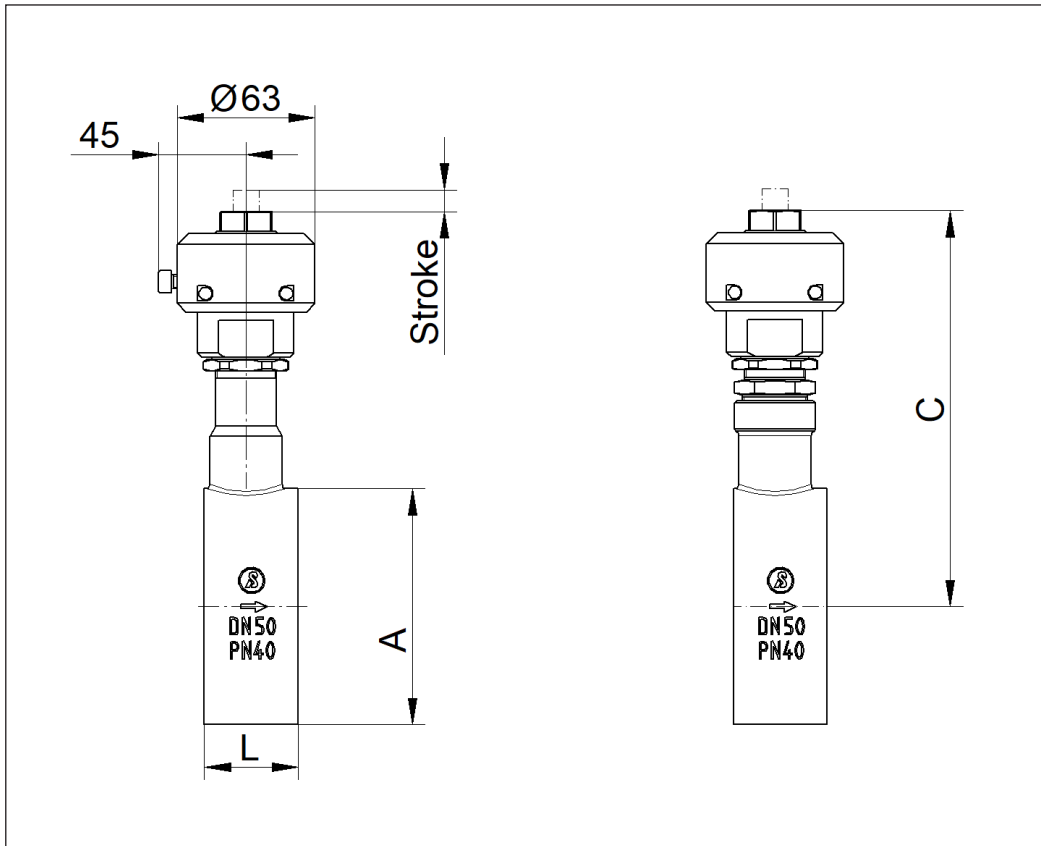
**For temperatures of 120°C and above:
obey application limits!**

DN	Sliding unit: carbon/SFC - stainless steel, coated						Sliding unit: carbon - STN2					
	max. admissible pressures for GS1-valves						max. admissible pressures for GS1-valves					
	100°C	150°C	200°C	250°C	300°C	350°C	100°C	150°C	200°C	250°C	300°C	350°C
15 - 25	40	36	31	28	26	24	40	36	31	28	26	24
32	40	36	31	28	26	24	40	36	31	28	25	22
40	40	36	31	28	26	24	27	26	24	19,5	16	14
50	40	36	31	28	26	24	40	36	31	28	26	24
65	40	36	31	28	26	24	38	36	31	28	23	19,5
80	40	36	31	28	26	24	22	21	20	16	13	11,5
100	25	24	22	19	16	14,5	13,5	12,5	12,0	9,8	8,1	7,0
125	16,5	15,5	15	12,5	10,5	9,5	8,9	8,4	8,0	6,5	5,3	4,6
150	16	16	16	16	13	11,5	11	10,5	9,8	7,9	6,5	5,6

Limitation for SFC-sliding discs: 300°C

Adjustable GS orifice 8090-GS1

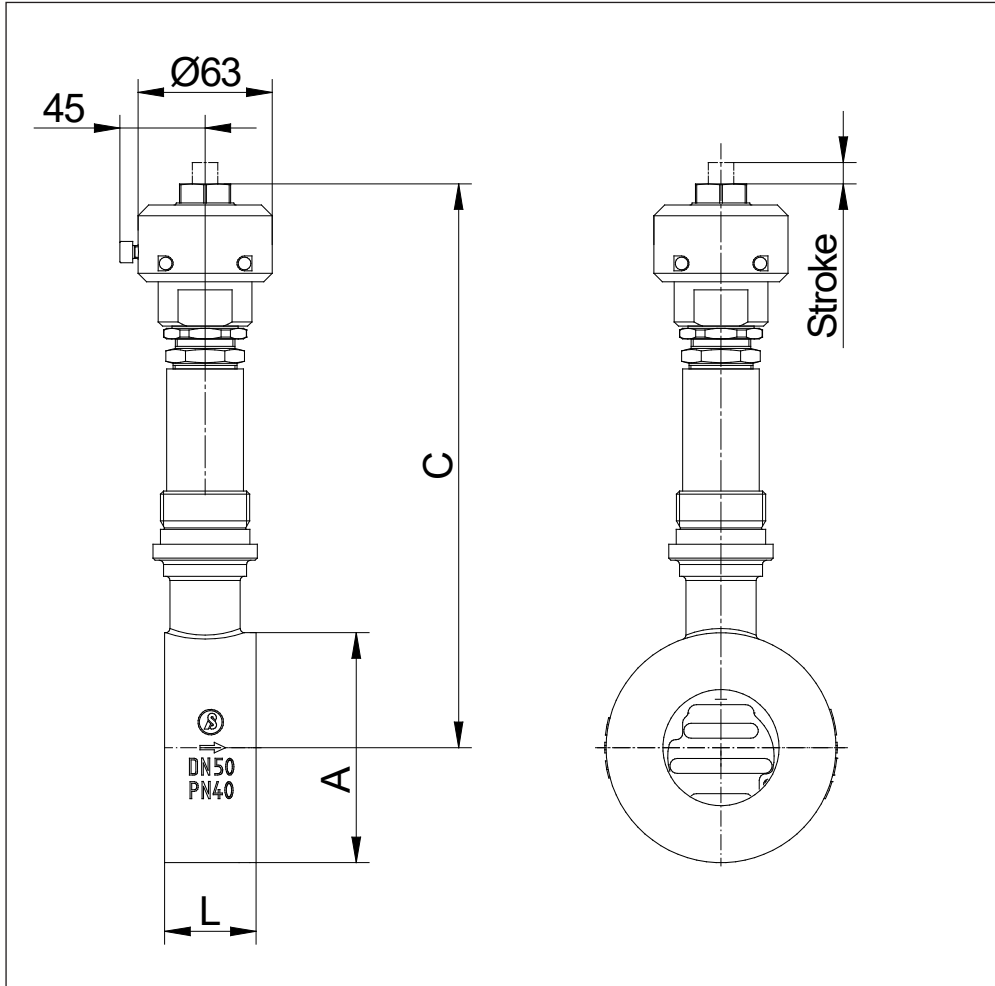
Dimensions and weight short version



DN	A	C		L	Stoke	Weight
		stainless steel	carbon steel			
15	53	302	302	33	5,2	4,2
20	62	307	307	33	4,7	4,5
25	72	312	312	33	4,7	4,6
32	82	316	316	33	4,7	4,7
40	92	321	321	33	4,7	4,8
50	108	333	333	43	6,7	5,7
65	126	343	343	46	6,7	6,1
80	142	351	351	46	6,7	9,5
100	164	363	363	52	7,2	7,7
125	194	376	376	56	7,2	9,5
150	219	391	391	56	6,7	11,4

dimensions in mm

Dimensions and weight long version



DN	A	C	L	Stoke	Weigh
15	53	302	33	5,2	4,5
20	62	307	33	4,7	4,7
25	72	312	33	4,7	4,8
32	82	316	33	4,7	4,9
40	92	321	33	4,7	5
50	108	333	43	6,7	6
65	126	343	46	6,7	6,4
80	142	351	46	6,7	10
100	164	363	52	7,2	8,1
125	194	376	56	7,2	10
150	219	391	56	6,7	11,9

dimensions in mm